

Country Floors

GROUND FLOOR PLAN



FIRST / SECOND FLOOR PLAN



BASEMENT PLAN



TERRACE PLAN



Plot Size (In sq.yds)	Floor	Built-up Area (In sq.ft)	Lawn/Terrace (In sq.ft)	Total Usable (In sq.ft)
250 (3 BHK)	GF	1770	614	2384
	FF	1770	377	2147
	SF	1770	377	2147

1 SQM = 1.196 SYD. • 1SQM = 10.764 SFT.
* AREAS ARE SUBJECT TO CHANGE

Country Floors

GROUND FLOOR PLAN



FIRST / SECOND FLOOR PLAN



BASEMENT PLAN



TERRACE PLAN



Plot Size (In sq.yds)	Floor	Built-up Area (In sq.ft)	Lawn/Terrace (In sq.ft)	Total Usable (In sq.ft)
303 (3 BHK)	GF	1999	648	2647
	FF	1999	436	2435
	SF	1999	436	2435

1 SQM = 1.196 SYD. • 1SQM = 10.764 SFT.
* AREAS ARE SUBJECT TO CHANGE

Country Floors

GROUND FLOOR PLAN



FIRST FLOOR PLAN



Plot Size (In sq.yds)	Floor	Built-up Area (In sq.ft)	Lawn/Terrace (In sq.ft)	Total Usable (In sq.ft)
495 (4 BHK + Utility)	GF	3560	1814	5374
	FF	2873	607	3480
	SF	2833	607	3440

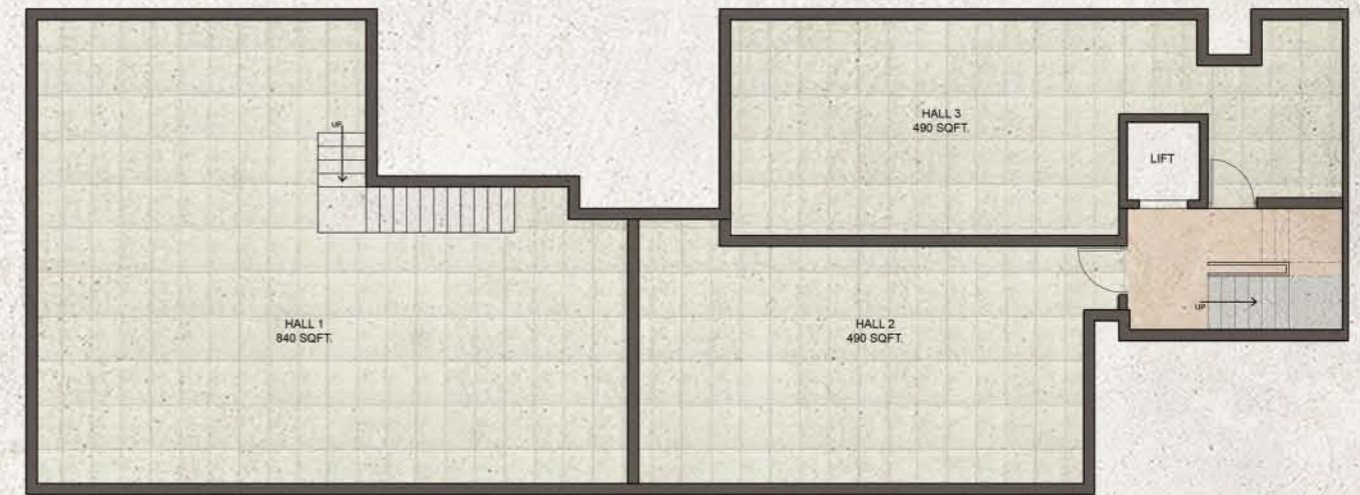
1 SQM = 1.196 SYD. • 1SQM = 10.764 SFT.
* AREAS ARE SUBJECT TO CHANGE

Country Floors

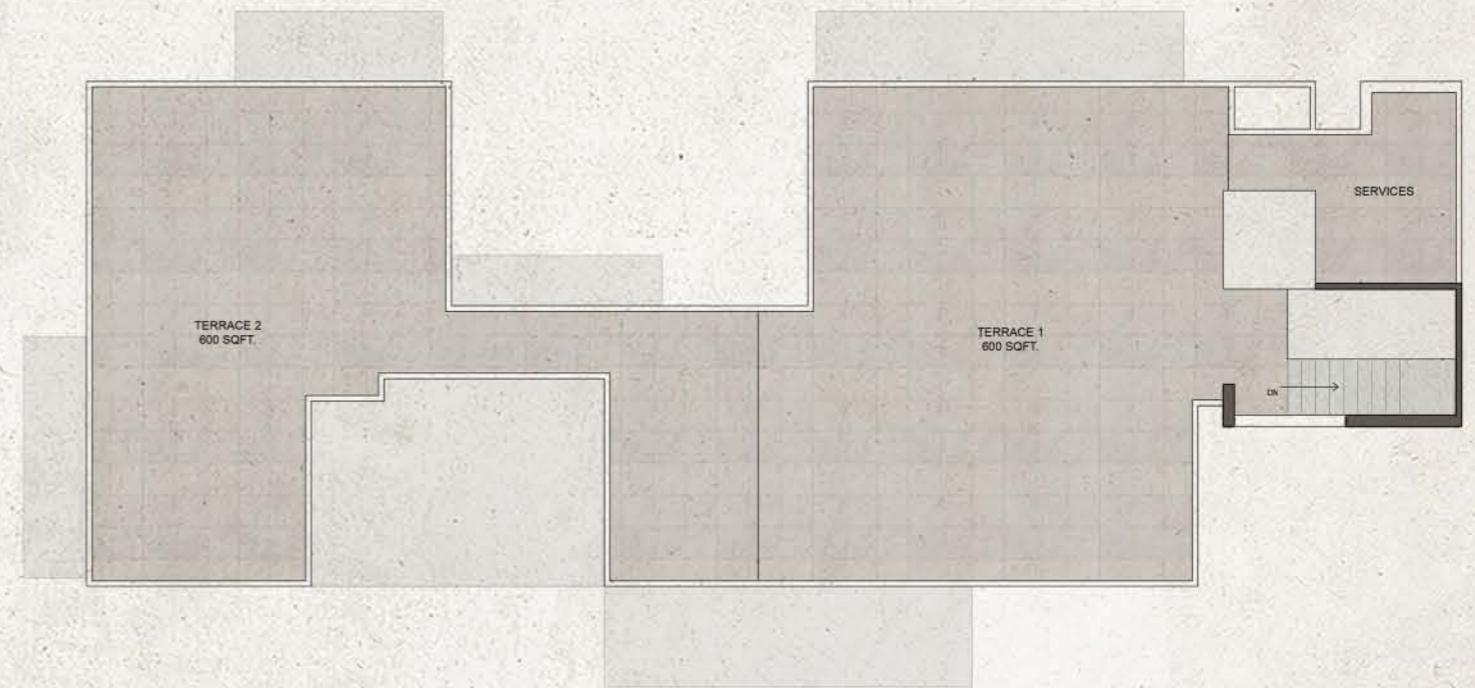
SECOND FLOOR PLAN



BASEMENT PLAN



TERRACE PLAN



Plot Size (In sq.yds)	Floor	Built-up Area (In sq.ft)	Lawn/Terrace (In sq.ft)	Total Usable (In sq.ft)
495 (4 BHK + Utility)	GF	3560	1814	5374
	FF	2873	607	3480
	SF	2833	607	3440

1 SQM = 1.196 SYD. • 1SQM = 10.764 SFT.
* AREAS ARE SUBJECT TO CHANGE

Country Floors

GROUND FLOOR PLAN



FIRST / SECOND FLOOR PLAN



BASEMENT PLAN



TERRACE PLAN



Plot Size (In sq.yds)	Floor	Built-up Area (In sq.ft)	Lawn/Terrace (In sq.ft)	Total Usable (In sq.ft)
579 (4 BHK + Utility)	GF	3712	1997	5709
	FF	2979	714	3693
	SF	2979	714	3693

1 SQM = 1.196 SYD. • 1SQM = 10.764 SFT.
* AREAS ARE SUBJECT TO CHANGE